

CONNECTON
fasteners for builders

Nails

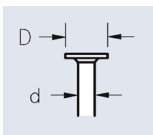
Materials

MATERIALS
Inox Aisi 430 / F17
Inox Aisi 304 / 18/10
Inox Aisi 316
Copper 99,9%
Aluminum
Hot Dipped Galvanized 50gr.*

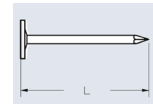
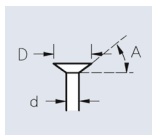
*In accordance with the standard

Types of Heads

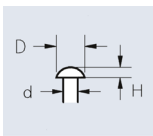
1. FLAT HEAD



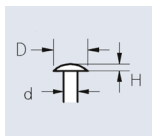
2. COUNTERSUNK HEAD



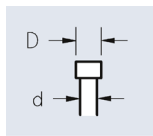
3. DOMED HEAD



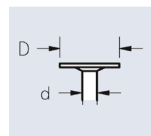
4. OVAL DOMED HEAD



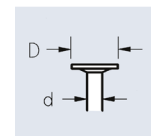
5. LOST HEAD



6. EXTRA LARGE HEAD



7. LARGE HEAD



TYPE	DIMENSIONS	TOLERANCES
1	$D = dx2$	$D \pm 0,5\text{mm} - L \pm 0,5\text{mm} - d \pm 0,02\text{mm}$
2	D en fonction de A (std 45°, 60°, 90°, 120°)	$D \pm 0,5\text{mm} - L \pm 0,5\text{mm} - d \pm 0,02\text{mm}$
3	$H = D/3 \quad D = dx2$	$D \pm 0,5\text{mm} - L \pm 0,5\text{mm} - d \pm 0,02\text{mm}$
4	$H = D/5 \quad D = dx2,5$	$D \pm 0,5\text{mm} - L \pm 0,5\text{mm} - d \pm 0,02\text{mm}$
5	$D = dx1,4$	$D \pm 0,5\text{mm} - L \pm 0,5\text{mm} - d \pm 0,02\text{mm}$
6	$D = dx3,5$	$D \pm 0,5\text{mm} - L \pm 0,5\text{mm} - d \pm 0,02\text{mm}$
7	$D = dx3$	$D \pm 0,5\text{mm} - L \pm 0,5\text{mm} - d \pm 0,02\text{mm}$

All nails are manufactured to BS 1202 for steel or stainless steel nails, BS 1202-2 for copper nails and BS 1202-3 for aluminium nails, in accordance with BS 5534:2003, «4.13 Mechanical fixings, 4.13.1 Nails» when clout nails and all nails for slates are concerned.

Types of Shanks

SMOOTH SHANK



JAGGED SHANK



ARS SHANK



L min / max = 18mm / 76mm

TWISTED SHANK



L min / max = 18mm / 76mm

Corrosion Class

Material	Corrosion Class	Use
Inox Aisi 316	MX1 - MX2 MX3 - MX4	Area with freeze-thaw cycles, humidity, coastal area & along roads where road salt is applied.
Inox Aisi 304 Cu	MX1 - MX2 MX3 - (MX4)	Area with freeze-thaw cycles, humidity, limited contact with salt.

Compliant with BS EN 845-1

The estimated number of years before the appearance of red rust (iron oxidation) or green patina (copper).

Bio	Inox F17	Aluminum	Inox 18/10	Inox 316	Copper	Environment
10	20	30	40	60	30	Countryside, unpolluted atmosphere, more than 40 km from the coast.
5	10	15	25	30	20	Urban area, lightly polluted atmosphere, more than 5 km from the coast.
Random	Random	10	15	20	10	Coastal area, high rainfall, high humidity.
Random	Random	Random	2	10	5	Area with high air pollution (industrial zones, ports, swimming pools) and along the coastline.