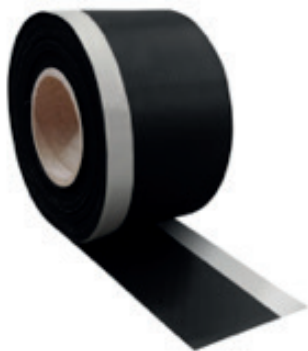


CONNECTFlex-ST EPDM



ST1 = 1x Butyl strip

30 mm

ST2 = 2x Butyl strip

30 mm

30 mm

ConnectFlex ST1 & ST2

EPDM membraan, 0,75mm dik, UV en ozon bestendig, met 1 (ST1) of 2 (ST2) zelfklevende butyl stro(o)k(en). Beschikbaar op rollen van 20m, breedtes van 100mm tot 400mm.

ConnectFlex ST1 & ST2

Membrane EPDM de 0,75mm. Elle est résistante aux UVS, et est imperméable. Prévüe de 1 (ST1) ou 2 (ST2) bande(s) autocollante(s) en butyl. Disponible en rouleaux de 20m, largeur de 100mm jusqu'à 400mm.

Technische specificaties Spécifications techniques

Conform EN 13956:2013-06 Flexibele banen voor waterafdichtingen - Kunststof en rubber banen voor waterafdichting voor daken - Définitions en eigenschappen

Conforme au EN 13956:2013-06 Feuilles souples d'étanchéité - Feuilles d'étanchéité de toiture plastiques et élastomères - Définitions et caractéristiques

Thickness	mm	0.750 (±5%)
Water tightness	100 kPa Method B	watertight
Resistance to static loads	kg	≥ 20
Resistance to impacts	mm method A	≥ 2000
Flexural strength in low temperatures	oC	≤ -30
Resistance to the impact of asphalt (resistance determined by water tightness)	40 kPa	watertight
Durability		
• water tightness after artificial ageing	2 kPa Method A	watertight
• in alkali environment		
Resistance to tearing (nail)		
• longitudinal direction	N	≥ 140
• transverse direction	N	≥ 160
Resistance to water vapour transmission:		
• Steam stream density	g[kg/(m2s)]	1.02 x 10 ⁻⁸
• Diffusion resistance of steam	(m2 s Pa)/kg	2.08 x 10 ⁺¹¹
• Diffusion resistance coefficient	μ	15,400
• Value Sd	Sd[m]	15
Reaction to fire	class	E
Hazardous substances	-	does not contain

Technical Specification

PN-EN 14909:2012, Flexible sheets for waterproofing. Plastic and rubber damp proof courses. Definitions and characteristics.

Product description

Single-layer membrane made of EPDM-rubber, self-adhesive with butyl-strips.

Intended use and scope of application

- Waterproof and damp proof insulation of the connections between the woodwork or carpentry and the wall.
- Connectflex-ST can be used as a course to prevent penetration of water or damp in to the wall construction. Used on the inside of the internal wall.
- Connectflex-ST works as a barrier to the movement of warm air from the inside of the building to the outside.
- Connectflex-ST can also be used as a waterproof protection of the subframes under the the cladding panels.
- Connectflex-ST self-adhesive with 1 or 2 strips for better adhesion on porous surfaces.

Mounting method

- mechanical assembly (with stitches to wooden subframe).
- using adhesive for a mechanical connection between the window frame and the wall.
- self-adhesive with 1 or 2 butyl stripes on the edge of the membrane. It is possible to place 2 strips on the same side or 1 strip on the opposite edge of the membrane.

Users information

- Laying conditions

Connectflex-ST tape should be laid in conditions allowing execution of building works and it should not be laid in temperatures below -15 °C.

Connectflex-ST should be glued on a prepared surface, free from dust, contamination and grease.

- Conditions of use

Execution of the damp proof insulation using Connectflex-ST membrane should be made acc. to the basic design prepared in conformance with applicable building regulations.

- Storage

Connectflex-ST should be stored before use on the construction site in the original packaging.

Connectflex-ST is made of EPDM elastomer, its storage duration before assembly is not limited.